



DAILY CURRENCY REPORT

13 April 2026

13 April 2026

Domestic Currencies

Currency	Expiry	Open	High	Low	Close	% Change
USDINR	28-Apr-26	93.2000	93.4400	93.0375	93.1575	-0.06
USDINR	26-May-26	93.7700	93.8950	93.5300	93.6200	-0.12
EURINR	28-Apr-26	109.1500	109.3500	109.0000	109.2600	0.28
GBPINR	28-Apr-26	125.2025	125.3625	125.0400	125.1650	0.07
JPYINR	28-Apr-26	59.4600	59.4600	59.4300	59.4300	0.73

Open Interest Snapshot

Currency	Expiry	% Change	% Oi Change	Oi Status
USDINR	28-Apr-26	-0.06	4.29	Fresh Selling
USDINR	26-May-26	-0.12	4.80	Fresh Selling
EURINR	28-Apr-26	0.28	-2.26	Short Covering
GBPINR	28-Apr-26	0.07	-0.71	Short Covering
JPYINR	28-Apr-26	0.73	17.50	Fresh Buying

Global Indices

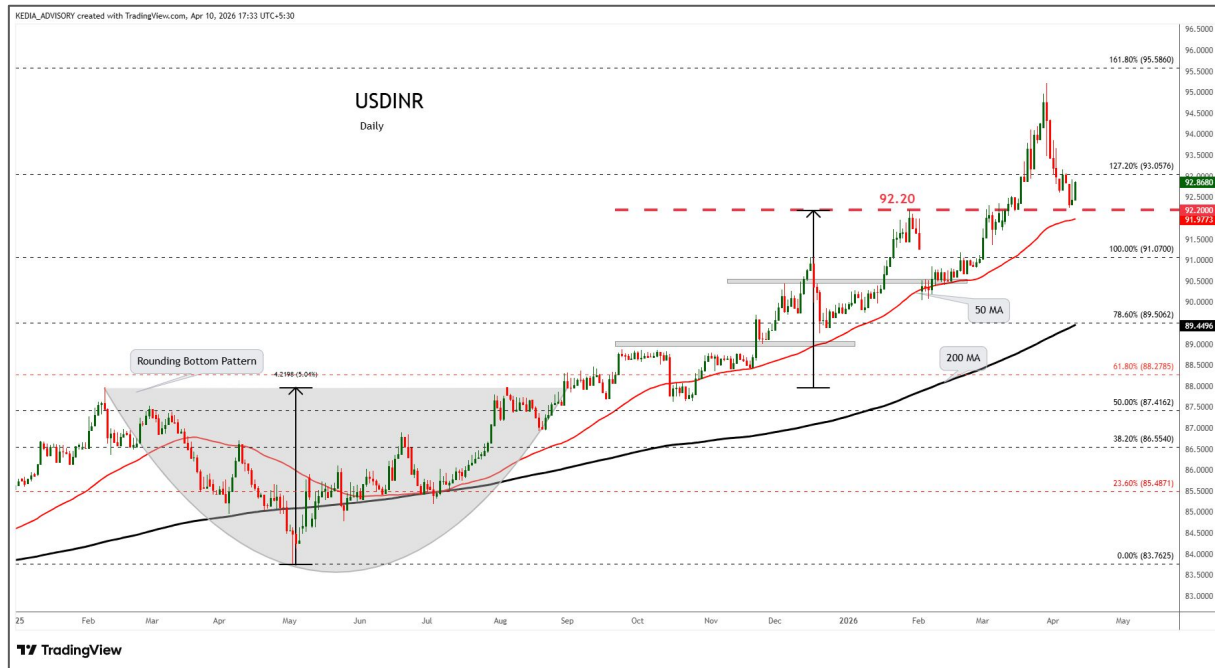
Index	Last	%Chg
Nifty	24050.60	1.16
Dow Jones	47916.57	-0.56
NASDAQ	22902.90	0.35
CAC	8259.60	0.17
FTSE 100	10600.53	-0.03
Nikkei	56454.79	-0.84

International Currencies

Currency	Last	% Change
EURUSD	1.1687	0.12
GBPUSD	1.3402	0.07
USDJPY	159.719	0.01
USDCAD	1.3861	-0.10
USDAUD	1.4213	-0.25
USDCHF	0.7921	-0.09

13 April 2026

Technical Snapshot



SELL USDINR APR @ 93.2 SL 93.5 TGT 92.9-92.7.

Trading Levels

Expiry	Close	R2	R1	PP	S1	S2
28-Apr-26	93.1575	93.61	93.38	93.21	92.98	92.81

Observations

USDINR trading range for the day is 92.81-93.61.

Rupee gained second consecutive week, supported by flows from the unwinding of residual arbitrage positions, as well as a plunge in crude oil prices.

ADB raised India's economic growth projection to 6.9 per cent for financial year 2026, citing strong domestic demand and lower tariffs imposed by US.

Inflows into Indian equity mutual funds rose 56% to an eight-month high of 404.5 billion rupees (\$4.36 billion) in March.

Technical Snapshot



SELL EURINR APR @ 109 SL 109.3 TGT 108.6-108.2.

Trading Levels

Expiry	Close	R2	R1	PP	S1	S2
28-Apr-26	109.2600	109.55	109.40	109.20	109.05	108.85

Observations

EURINR trading range for the day is 108.85-109.55.

Euro firmed supported by cautious optimism that the conflict could be nearing an end.

Germany's annual inflation rate climbed to 2.7% in march 2026, confirming preliminary estimates and accelerating from 1.9% in February.

Eurozone retail sales edged down 0.2% month-on-month in February 2026, following stagnation in January and aligning with market forecasts.

Technical Snapshot



SELL GBPINR APR @ 125.2 SL 125.6 TGT 124.7-124.4.

Trading Levels

Expiry	Close	R2	R1	PP	S1	S2
28-Apr-26	125.1650	125.51	125.34	125.19	125.02	124.87

Observations

GBPINR trading range for the day is 124.87-125.51.

GBP gain as market attention remained fixed on the fragile US-Iran ceasefire and the high-stakes negotiations set for Pakistan this weekend.

Bank of England's Bailey says markets still ahead of themselves in pricing rate hikes

The RICS UK Residential Market Survey showed the house price balance declined to -23% in March 2026 from -14% in January

13 April 2026

Technical Snapshot



SELL JPYINR APR @ 59.5 SL 59.75 TGT 59.2-59.

Trading Levels

Expiry	Close	R2	R1	PP	S1	S2
28-Apr-26	59.4300	59.47	59.45	59.44	59.42	59.41

Observations

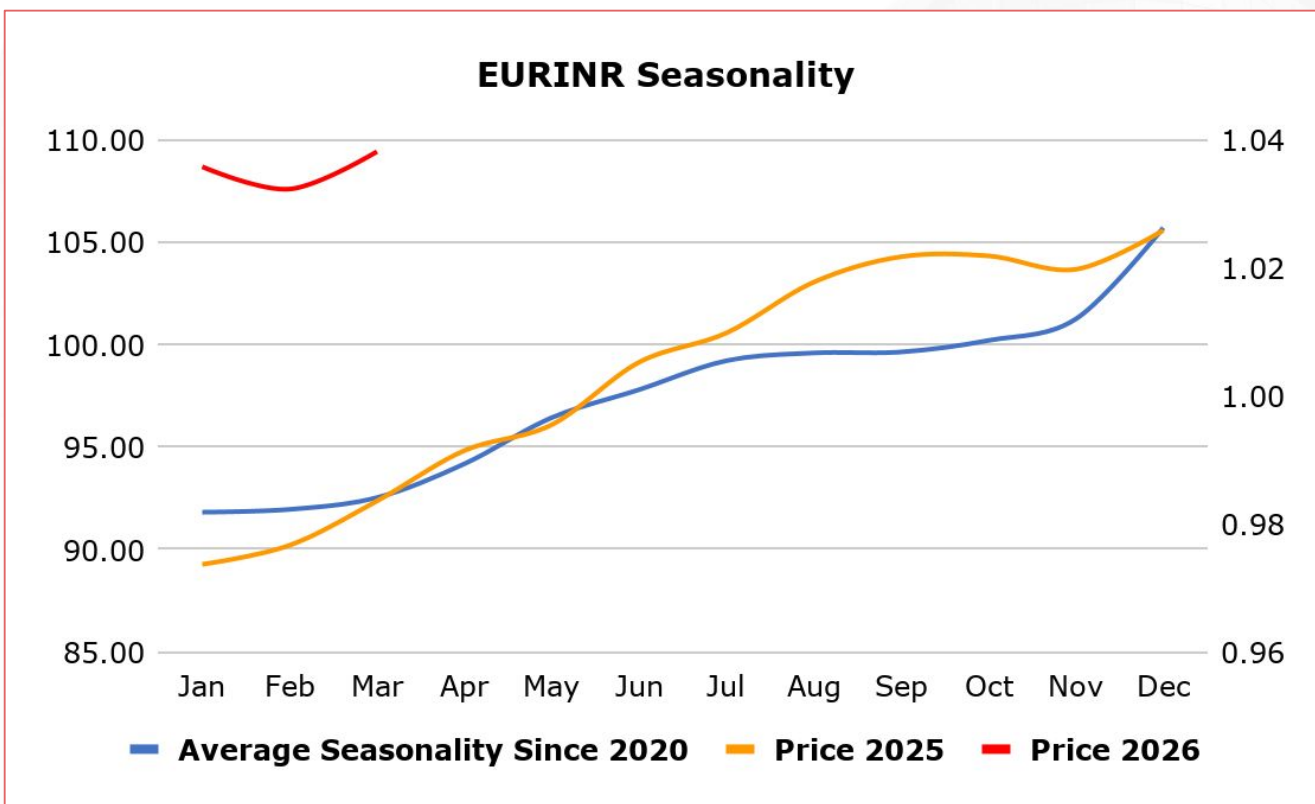
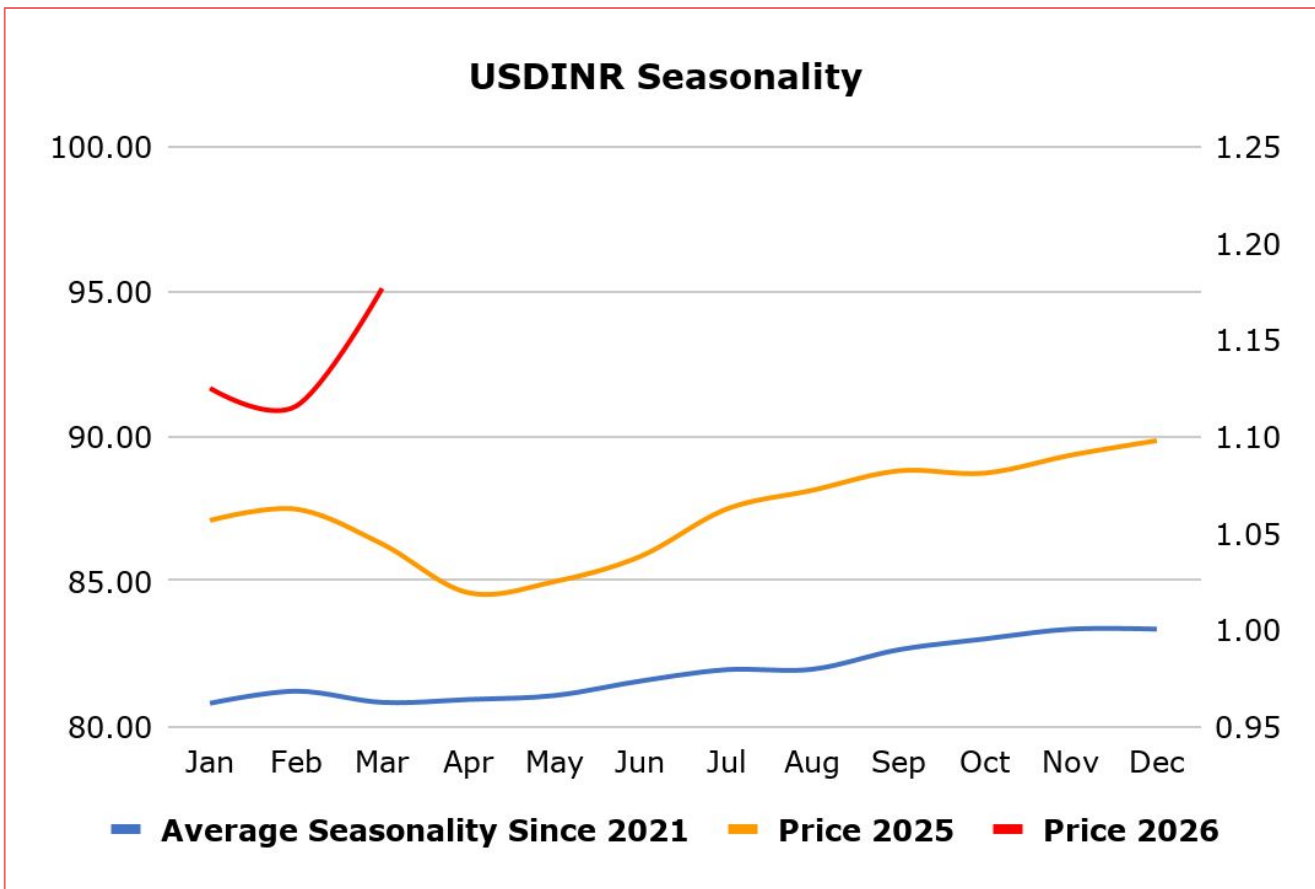
JPYINR trading range for the day is 59.41-59.47.

JPY gains drawing some support as a two-week US-Iran ceasefire triggered a sharp decline in oil prices and eased stagflation concerns.

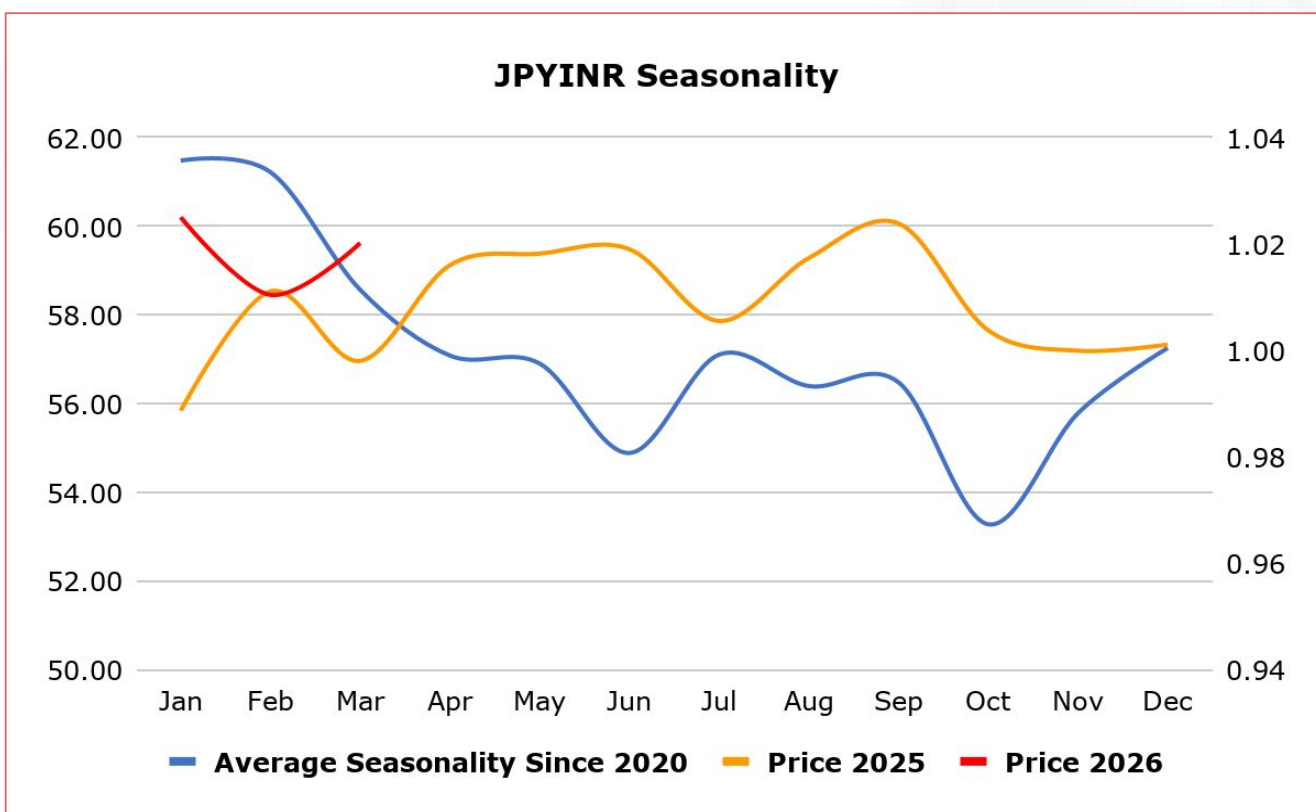
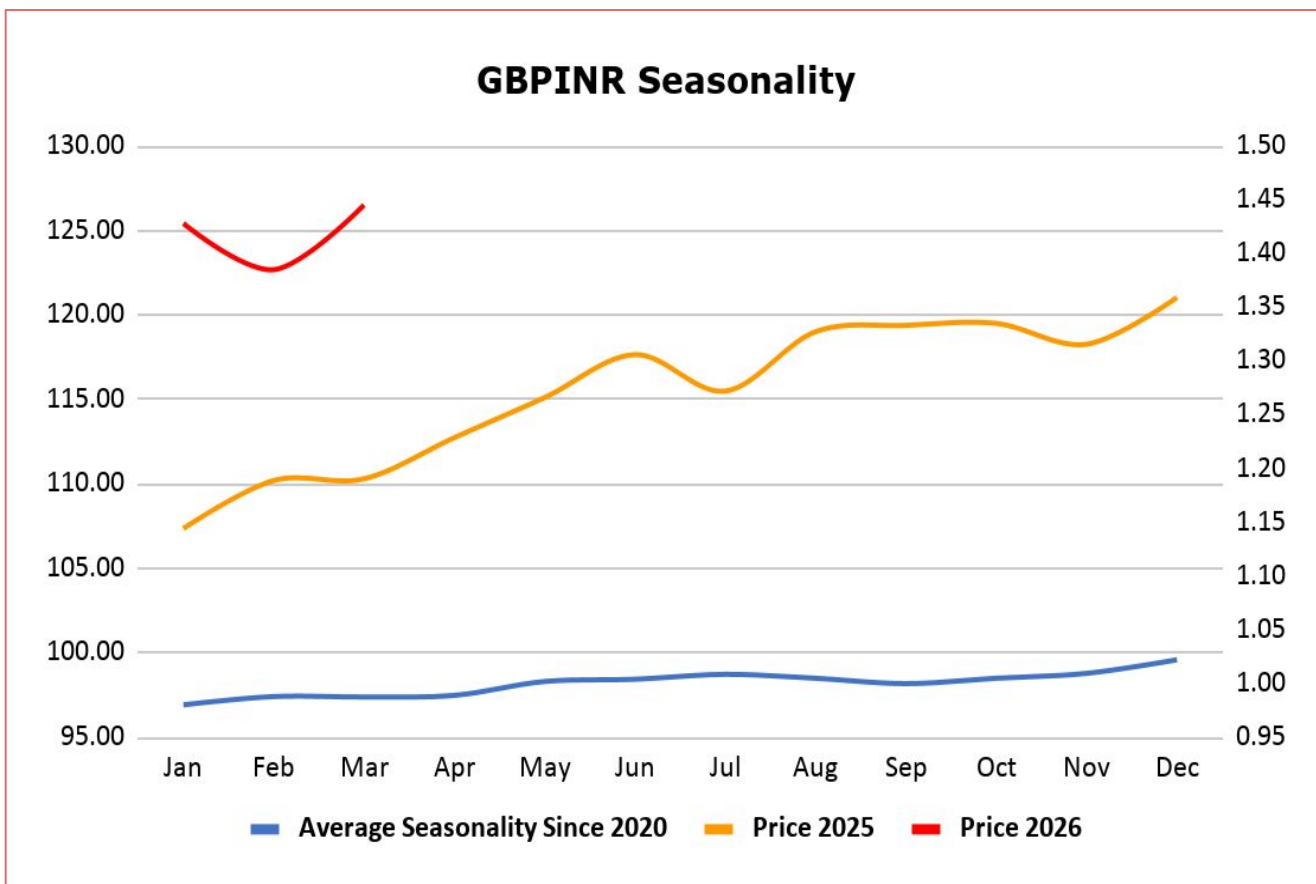
Japan's producer prices rose 2.6% yoy in March 2026, quickening from a marginally revised 2.1% increase in the prior month.

Japan's bank lending rose 4.8% yoy in March 2026, slightly accelerating from 4.5% in the prior month and marking the strongest growth since April 2021.

13 April 2026



13 April 2026



Economic Data

13 April 2026

Date	Curr.	Data
Apr 13	USD	Existing Home Sales
Apr 14	EUR	German WPI m/m
Apr 14	USD	NFIB Small Business Index
Apr 14	USD	ADP Weekly Employment Change
Apr 14	USD	Core PPI m/m
Apr 14	USD	PPI m/m
Apr 15	EUR	French Final CPI m/m
Apr 15	EUR	Industrial Production m/m
Apr 15	USD	Empire State Manufacturing Index
Apr 15	USD	Import Prices m/m
Apr 15	USD	NAHB Housing Market Index
Apr 15	USD	Crude Oil Inventories
Apr 15	USD	FOMC Member Bowman Speaks
Apr 15	USD	Beige Book
Apr 16	USD	TIC Long-Term Purchases

Date	Curr.	Data
Apr 16	EUR	Final Core CPI y/y
Apr 16	EUR	Final CPI y/y
Apr 16	EUR	ECB Policy Meeting Accounts
Apr 16	USD	Philly Fed Manufacturing Index
Apr 16	USD	Unemployment Claims
Apr 16	USD	FOMC Member Williams Speaks
Apr 16	USD	Capacity Utilization Rate
Apr 16	USD	Industrial Production m/m
Apr 16	USD	Natural Gas Storage
Apr 16	USD	FOMC Member Miran Speaks
Apr 17	EUR	Current Account
Apr 17	EUR	Italian Trade Balance
Apr 17	EUR	Trade Balance
Apr 17	USD	FOMC Member Daly Speaks
Apr 17	USD	FOMC Member Barkin Speaks

News

China's factory-gate prices rose for the first time in 3-1/2 years in March, official data showed, in an early sign that the Middle East conflict is feeding cost pressures into the world's second-largest economy. Economists warned that a move to inflation driven by higher costs rather than stronger demand could complicate policy decisions, crimping growth and limiting scope for stimulus. The producer price index (PPI) increased 0.5% from a year earlier, data from the National Bureau of Statistics showed, ending a 41-month streak of declines. Producer prices surged in energy-intensive industries, with the non-ferrous metal mining and beneficiation sector recording a 36.4% jump last month and the non-ferrous metal smelting and rolling processing sector posting a 22.4% rise, as higher oil prices pushed up factory-gate costs. Imported inflation leaves firms with little buffer if they are unable to pass on higher input costs, squeezing margins, investment and hiring, economists said. Meanwhile, consumer prices rose at a slightly slower pace.

International Monetary Fund chief Kristalina Georgieva said the global lender expected near-term demand for IMF financial support to rise to between \$20 billion to \$50 billion as result of spillovers from the war in the Middle East. Georgieva said the now-paused war was testing the global economy, with a 13%-cut in the daily flow of the world's oil and a 20%-cut in liquefied natural gas triggering a supply shock that had sent energy prices soaring, while disrupting supply chains. In prepared remarks ahead of next week's meetings of the IMF and World Bank, Georgieva said the war had prompted the Fund to cut its global growth forecast U.S. President Donald Trump on Tuesday announced a two-week ceasefire with Iran, but Israel's continued bombardment of Lebanon threatens to derail talks to forge a permanent peace. "Even in a best case, there will be no neat and clean return to the status quo ante," Georgieva said. Qatar's Ras Laffan complex, which produces 93% of the Gulf's LNG, for instance, had been shut since March 2 and could take three to five years to return to full capacity.

**Scan the QR to connect
with us**



KEDIA ADVISORY

KEDIA STOCKS & COMMODITIES RESEARCH PVT LTD.

Mumbai. INDIA.

For more details, please contact Mobile: +91 9619551022

Email: info@kediaadvisory.com

SEBI REGISTRATION NUMBER - INH000006156

For more information or to subscribe for monthly updates

Visit www.kediaadvisory.com

This Report is prepared and distributed by Kedia Stocks & Commodities Research Pvt Ltd. for information purposes only. The recommendations, if any, made herein are expressions of views and/or opinions and should not be deemed or construed to be neither advice for the purpose of purchase or sale through KSCRPL nor any solicitation or offering of any investment /trading opportunity. These information/opinions/ views are not meant to serve as a professional investment guide for the readers. No action is solicited based upon the information provided herein. Recipients of this Report should rely on information/data arising out of their own investigations. Readers are advised to seek independent professional advice and arrive at an informed trading/investment decision before executing any trades or making any investments. This Report has been prepared on the basis of publicly available information, internally developed data and other sources believed by KSCRPL to be reliable. KSCRPL or its directors, employees, affiliates or representatives do not assume any responsibility for or warrant the accuracy, completeness, adequacy and reliability of such information/opinions/ views. While due care has been taken to ensure that the disclosures and opinions given are fair and reasonable, none of the directors, employees, affiliates or representatives of KSCRPL shall be liable for any direct, indirect, special, incidental, consequential, punitive or exemplary damages, including lost profits arising in any way whatsoever from the information/opinions/views contained in this Report. The possession, circulation and/or distribution of this Report may be restricted or regulated in certain jurisdictions by appropriate laws. No action has been or will be taken by KSCRPL in any jurisdiction (other than India), where any action for such purpose (s) is required. Accordingly, this Report shall not be possessed, circulated and/ or distributed in any such country or jurisdiction unless such action is in compliance with all applicable laws and regulations of such country or jurisdiction. KSCRPL requires such a recipient to inform himself about and to observe any restrictions at his own expense, without any liability to KSCRPL. Any dispute arising out of this Report shall be subject to the exclusive jurisdiction of the Courts in India.